

# Human SCF Protein

Cat. No. SCF-HE001

## Description

<b>Source</b>	Recombinant Human SCF Protein is expressed from E.coli without tag. It contains Glu26-Ala189.
<b>Accession</b>	P21583-1
<b>Molecular Weight</b>	The protein has a predicted MW of 18.45 kDa same as Bis-Tris PAGE result.
<b>Endotoxin</b>	Less than 0.02EU per µg by the LAL method.
<b>Purity</b>	> 95% as determined by Bis-Tris PAGE

## Formulation and Storage

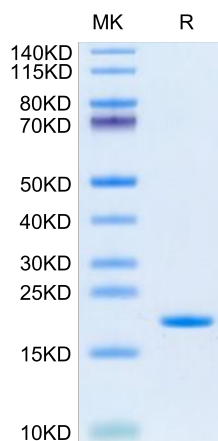
<b>Formulation</b>	Lyophilized from 0.22µm filtered solution in PBS (pH 7.4). Normally 8% trehalose is added as protectant before lyophilization.
<b>Reconstitution</b>	Centrifuge the tube before opening. Reconstituting to a concentration more than 100 µg/ml is recommended. Dissolve the lyophilized protein in distilled water.
<b>Storage</b>	-20 to -80°C for 12 months as supplied from date of receipt. -80°C for 3 months after reconstitution. Recommend to aliquot the protein into smaller quantities for optimal storage. Please minimize freeze-thaw cycles.

## Background

Kit-ligand (Kitl) also known as steel factor, stem cell factor and mast cell growth factor plays a crucial role in the development and maintenance of the melanocyte lineage in adult skin. Kitl exerts permanent survival, proliferation and migration functions in Kit receptor-expressing melanocytes.

## Assay Data

### Bis-Tris PAGE

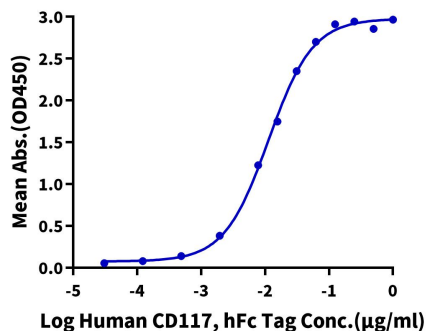


Human SCF on Bis-Tris PAGE under reduced condition. The purity is greater than 95%.

### ELISA Data

#### Human SCF, No Tag ELISA

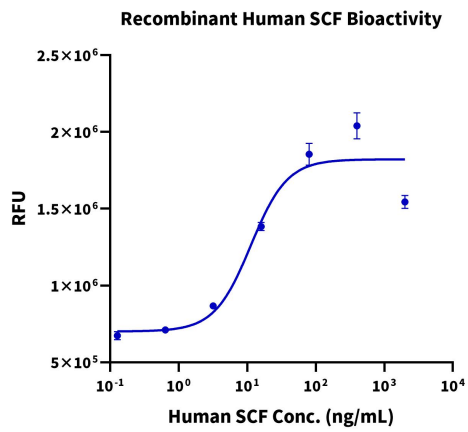
0.2µg Human SCF, No Tag Per Well



Immobilized Human SCF at 2µg/ml (100µl/well) on the plate. Dose response curve for Human CD117, hFc Tag with the EC50 of 11.3ng/ml determined by ELISA (QC Test).

Assay Data

Cell Based Assay



Measured in a cell proliferation assay using Mo7e cells. The ED50 for this effect is 1-8 ng/mL (QC Test).